

Child HCBS Waiver Performance Packets **OVERVIEW**

Office of Performance Measurement and Evaluation

July, 2014

Background



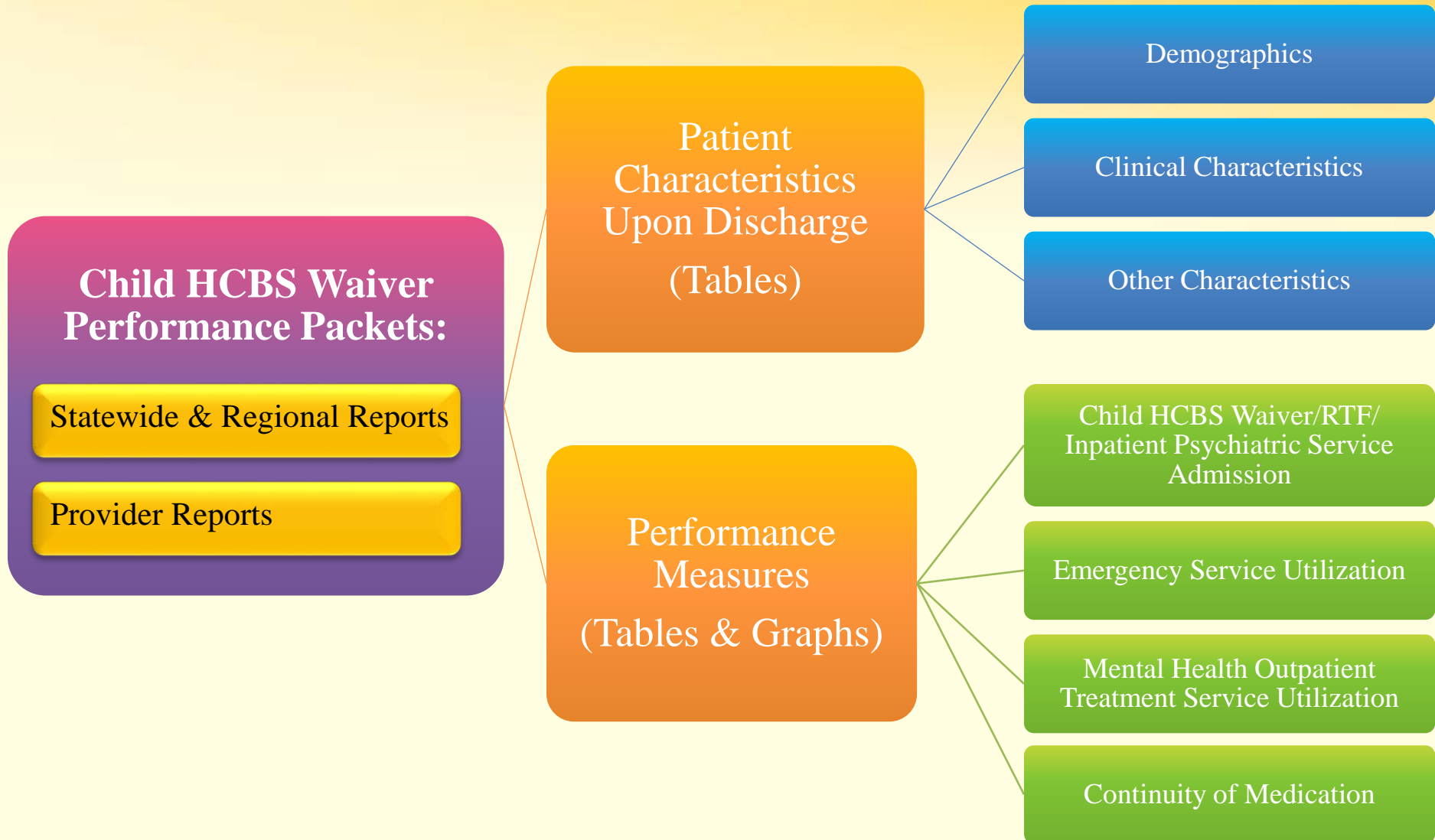
- ❑ We use CAIRS data to identify individuals who have been discharged from the **Child HCBS Waiver** program during calendar years 2011 and 2012.
- ❑ Individuals who were not eligible for Medicaid during the follow-up period are excluded from performance measures calculations.
- ❑ Medicaid fee-for-service claims and managed care encounter data are examined for post discharge service and medication use.
- ❑ Performance measures calculation:

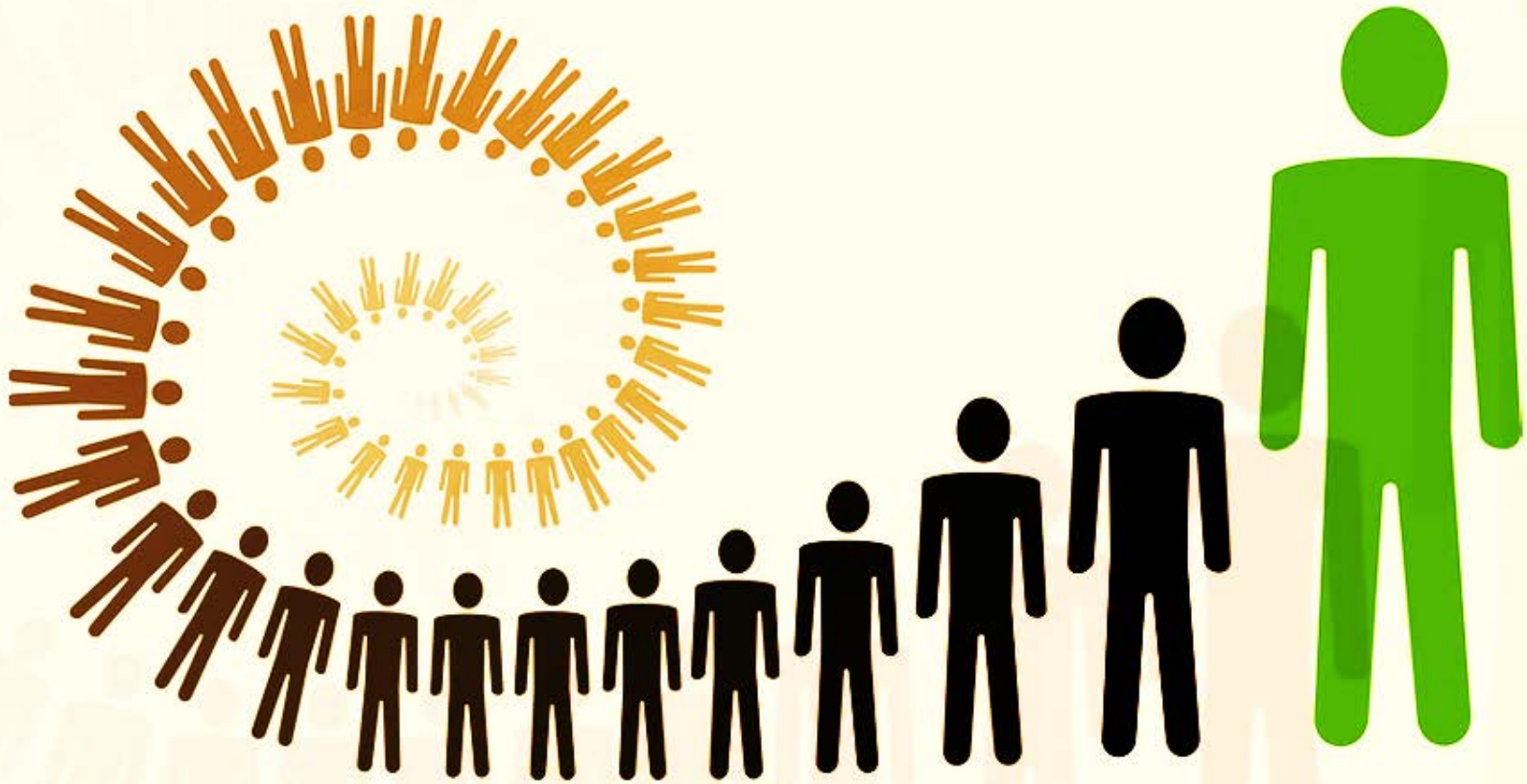
$$Rate = \frac{Numerator}{Denominator}$$

of Discharges in the denominator followed by XX service within XX Days of Discharge
Data Source: CAIRS/MEDICAID

of Discharges with Continuous Medicaid Eligibility up to XX Days post Discharge
Data Source: CAIRS

Outline





Patient Characteristics

Demographics

Clinical Characteristics

Other Characteristics

Patient Characteristics Upon Discharge

Demographics



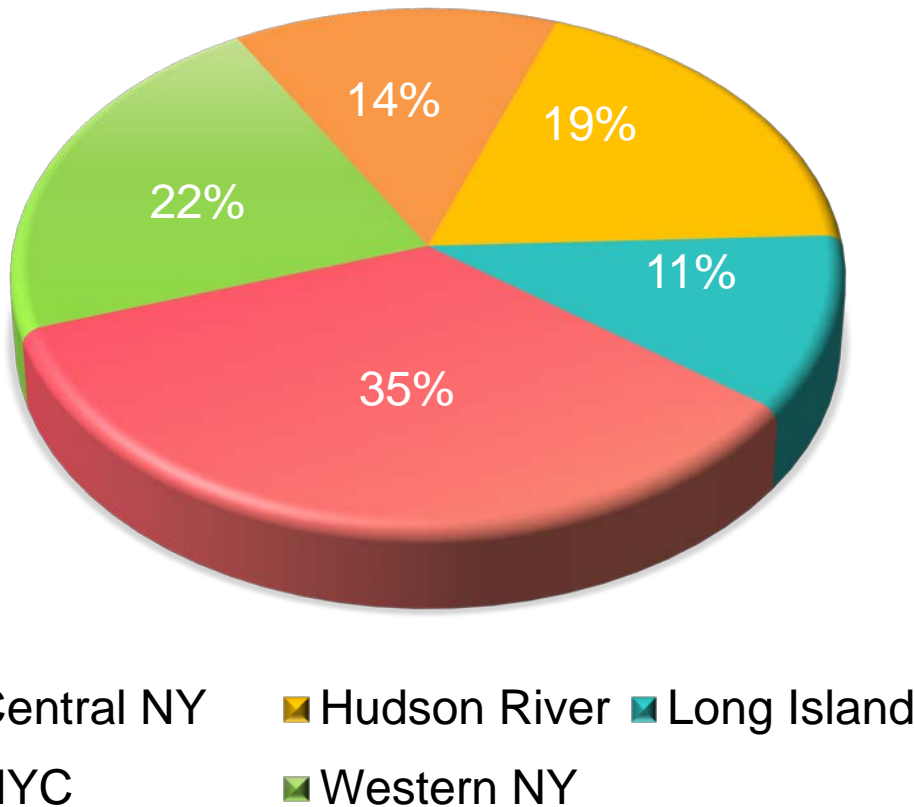
- Total Discharges (# Individuals)**
- Proportion with Non-Expired Medicaid**
- Proportion had Continuous Medicaid**
 - 7, 30, 45, 60, 90 Days post Discharge
- Age**
 - < 13 , 13 – 15, 16+
- Gender**
 - Female, Male
- Region of Fiscal Responsibility**
 - Central NY, Hudson River, Long Island, New York City, Western NY

Statewide Demographics

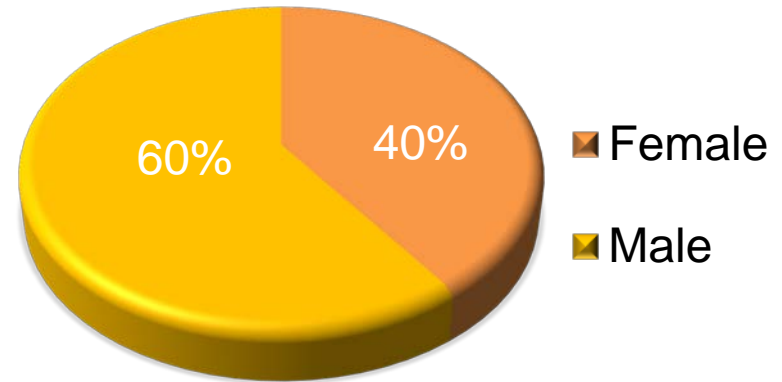
(2012 Discharges)



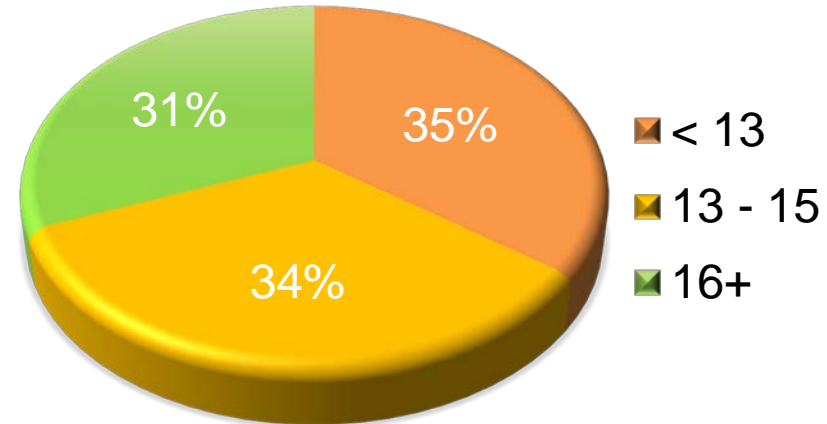
Region of Fiscal Responsibility



Gender



Age



Patient Characteristics Upon Discharge

Clinical Characteristics



Length of Stay

- Average Discharge
LOS (Days)
- < 6 Months
- 6 Months to < 1 Year
- 1 Year to < 2 Years
- 2 Years to < 3 Years
- 3 Years or Longer

Primary Diagnosis

- Mood Disorder
- Disruptive Behavior
Disorder
- Anxiety
- Schizophrenia
- ADHD
- Other

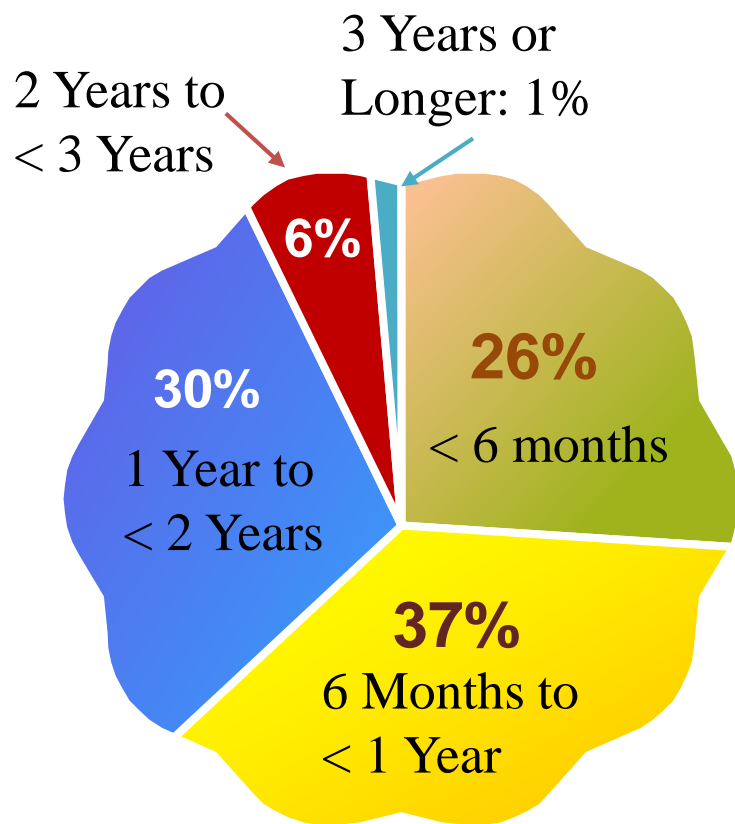
Statewide Characteristics

(2012 Discharges)

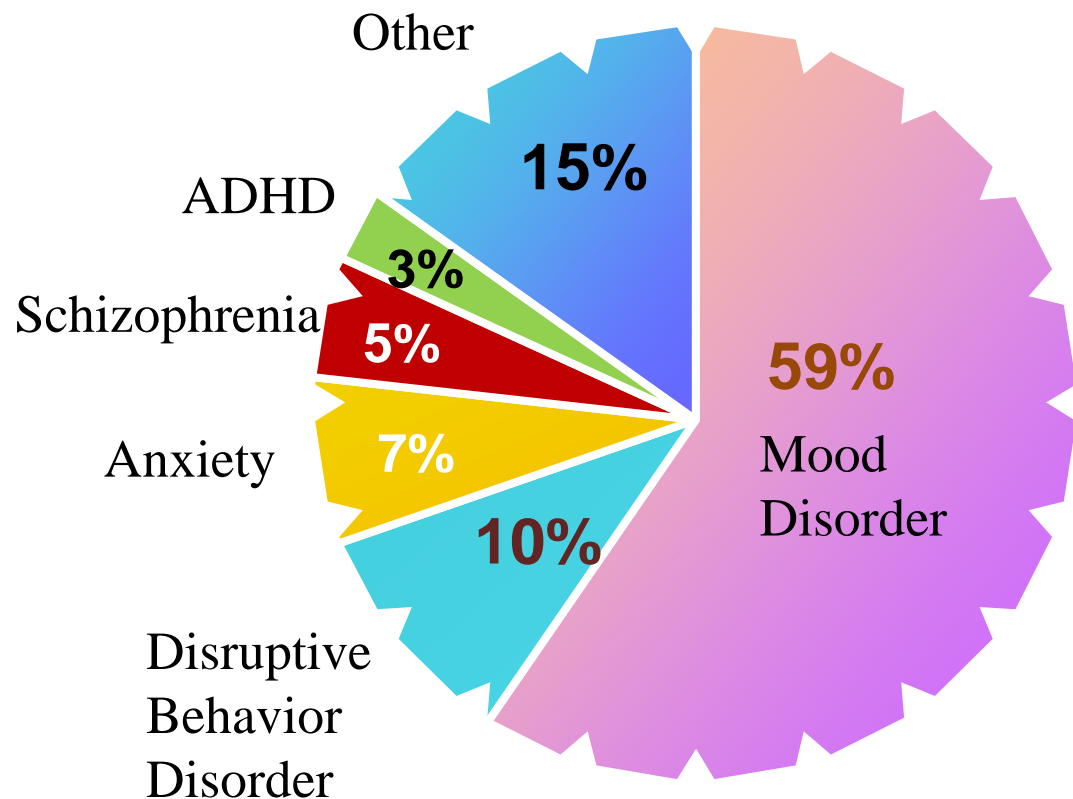


Length of Stay

(Avg LOS=**347** Days)



Primary Diagnosis



Patient Characteristics Upon Discharge

Other Characteristics



Custody Group

- Family/
Independent Living
- Foster Care
- Other

Living Situation Group

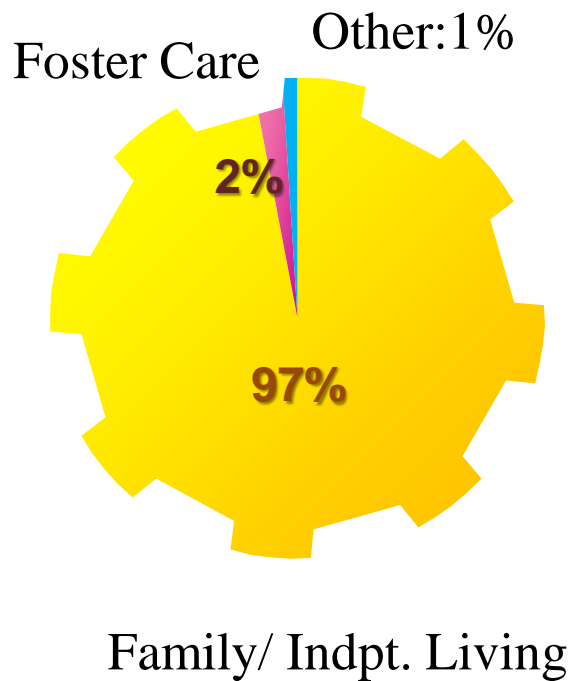
- Family/ Independent Living
- Foster Care
- OMH Congregate/Crisis
- RTC
- RTF
- State Inpatient Article 28/31
Hospital
- Other
- Unknown

Statewide Characteristics

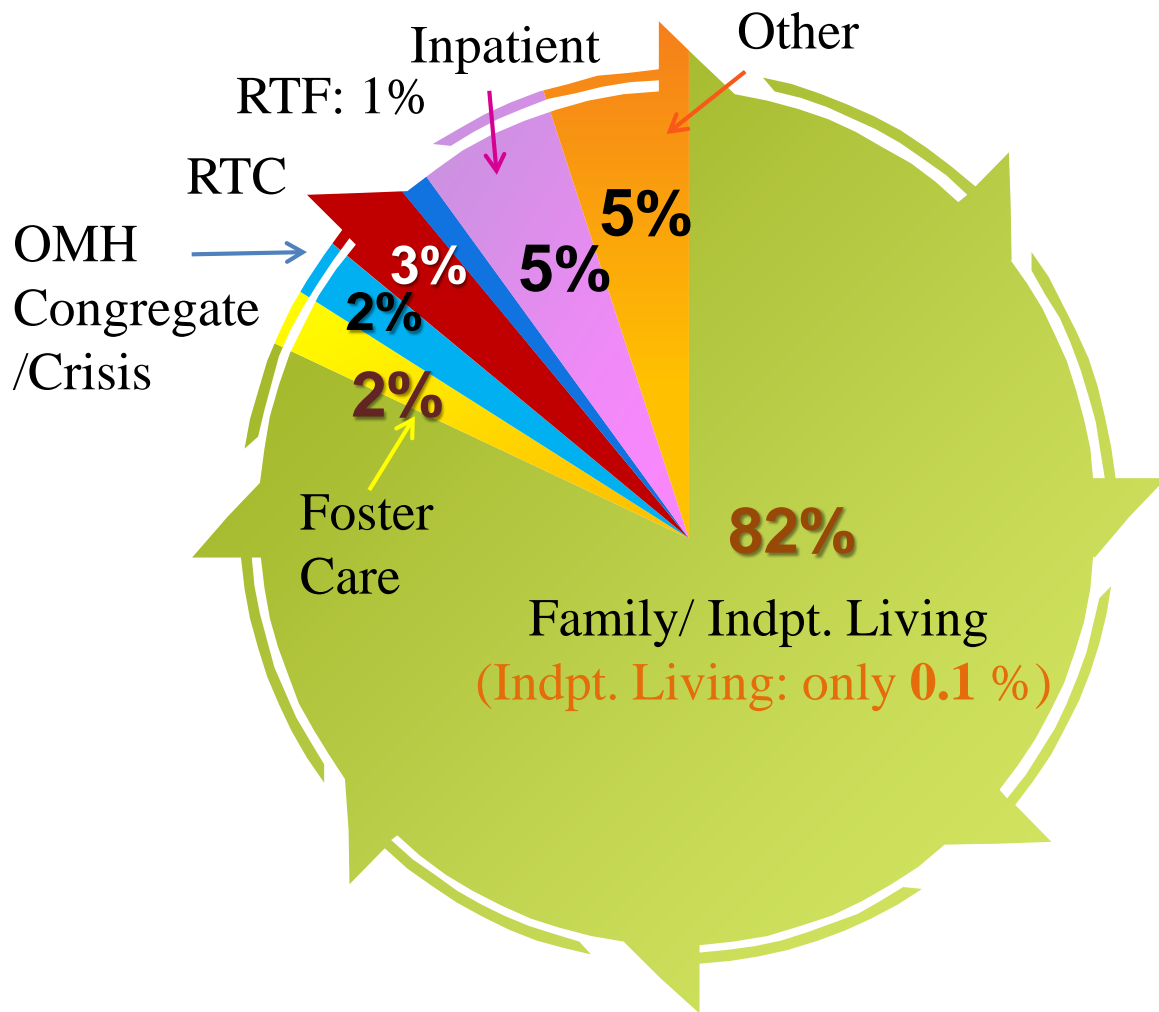
(2012 Discharges)



Custody Group



Living Situation Group



Patient Characteristics

Demographics (Parson's C&F)



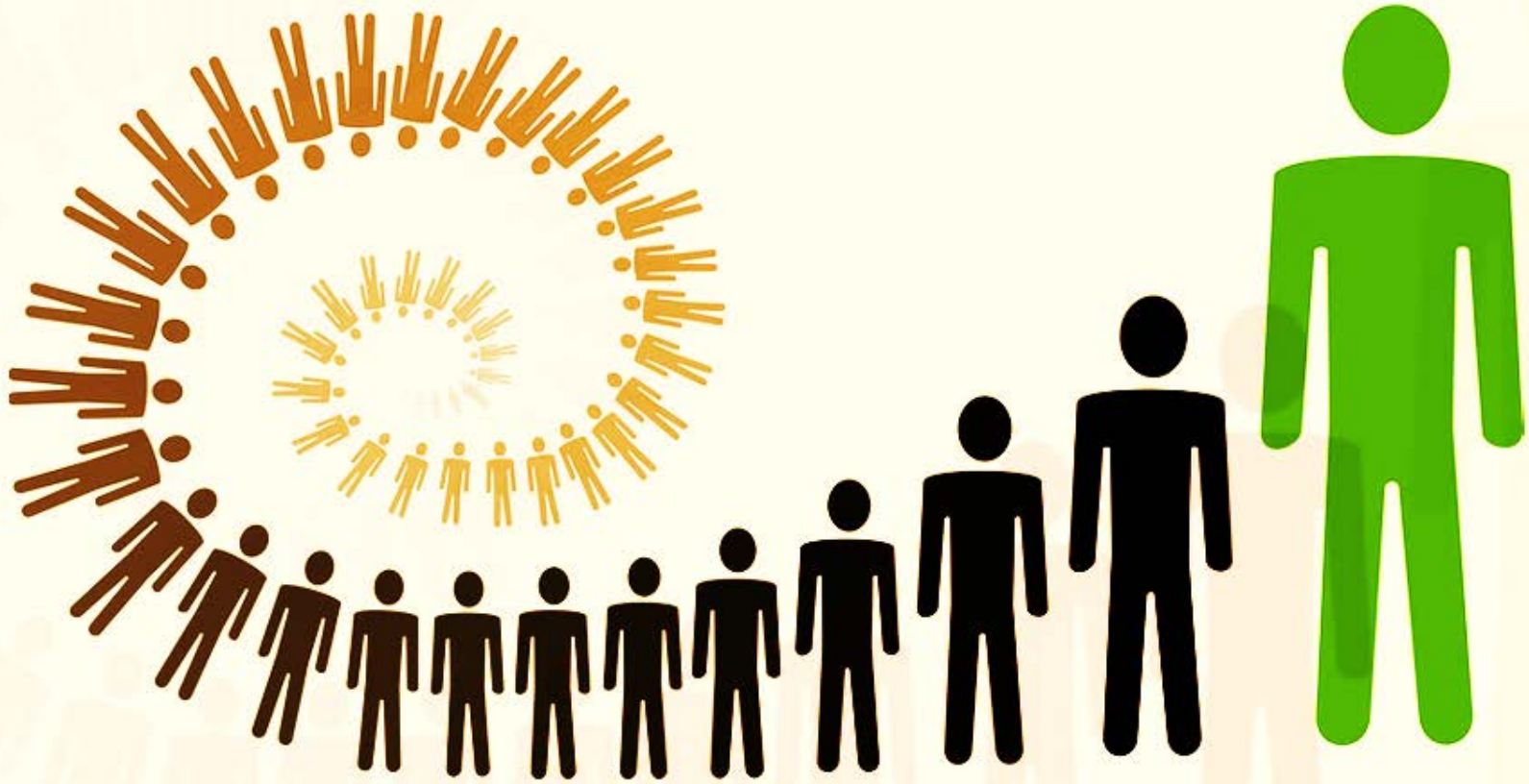
2011 & 2012 Child HCBS Waiver Performance Measures

141

Provider: Parsons Child and Family Center || Region: Hudson River

Patient Characteristics Upon Discharge

| Characteristics | Category | Group | CY 2011 Discharges | | | CY 2012 Discharges | | |
|-----------------|---------------------------------|------------------|--------------------|-----------------|-------------------|--------------------|-----------------|-------------------|
| | | | Provider | Region | Statewide | Provider | Region | Statewide |
| Demographics | Total Discharges | | 107 (106 Indvs) | 306 (303 Indvs) | 1419 (1403 Indvs) | 124 (122 Indvs) | 307 (304 Indvs) | 1464 (1444 Indvs) |
| | Age | < 13 | 38 (35.5 %) | 106 (34.6 %) | 499 (35.2 %) | 39 (31.5 %) | 113 (36.8 %) | 515 (35.2 %) |
| | | 13 - 15 | 33 (30.8 %) | 108 (35.3 %) | 502 (35.4 %) | 44 (35.5 %) | 103 (33.6 %) | 501 (34.2 %) |
| | | 16+ | 36 (33.6 %) | 92 (30.1 %) | 418 (29.5 %) | 41 (33.1 %) | 91 (29.6 %) | 448 (30.6 %) |
| | Gender | Female | 39 (36.4 %) | 120 (39.2 %) | 564 (39.7 %) | 59 (47.6 %) | 139 (45.3 %) | 588 (40.2 %) |
| | | Male | 68 (63.6 %) | 186 (60.8 %) | 855 (60.3 %) | 65 (52.4 %) | 168 (54.7 %) | 876 (59.8 %) |
| | Region of Fiscal Responsibility | Central New York | 14 (13.1 %) | 28 (9.2 %) | 182 (12.8 %) | 14 (11.3 %) | 37 (12.1 %) | 200 (13.7 %) |
| | | Hudson River | 93 (86.9 %) | 278 (90.8 %) | 279 (19.7 %) | 110 (88.7 %) | 270 (87.9 %) | 271 (18.5 %) |



Performance Measures

Child Waiver/RTF/Inpatient Psychiatric Service Admission

Emergency Service Utilization

Mental Health Outpatient Treatment Service Utilization

Continuity of Medication

Performance Measures

Four Measure Domains



Child HCBS Waiver/RTF/ Inpatient Psychiatric Service

Admission

- Child HCBS Waiver
- RTF
- Article 28/31 Hospital
- State PC Hospital

Follow-up windows:

- 30 Days
- 90 Days

Emergency Service Utilization

- Psychiatric ER
- Medical ER
- Overall ER

Follow-up windows:

- 7 Days
- 30 Days
- 90 Days

Mental Health Outpatient Treatment Service Utilization

- Clinic
- Specialty
- Overall

Follow-up windows:

- 7 Days
- 30 Days

Continuity of Medication

- Psychotropic Medication Fill

Follow-up windows:

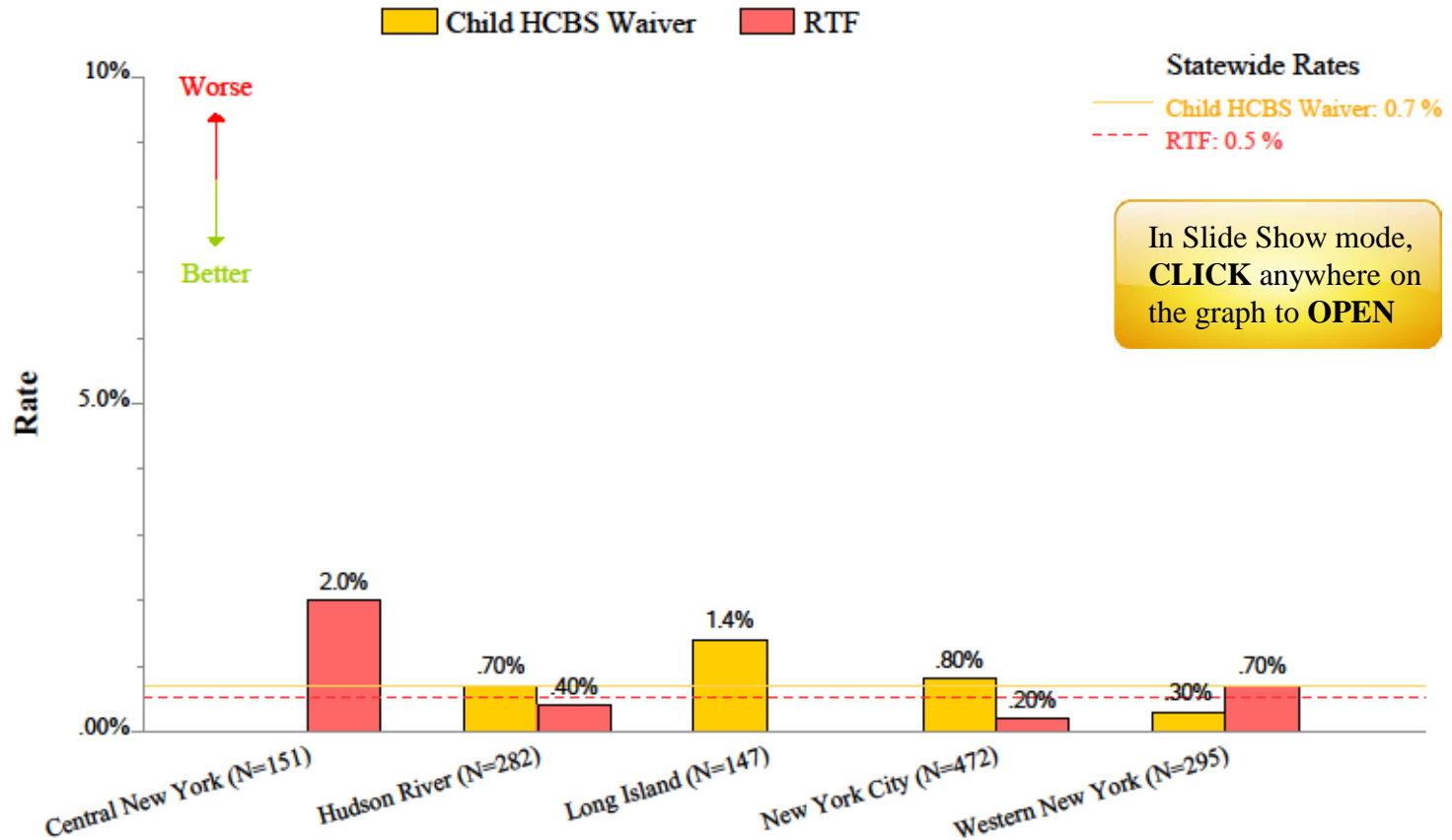
- 45 Days
- 90 Days

Performance Measures

Regional Graphs



**Graph 1.1: Child HCBS Waiver/RTF Admission by Region - 2012
within 30 Days of a Child HCBS Waiver Discharge**



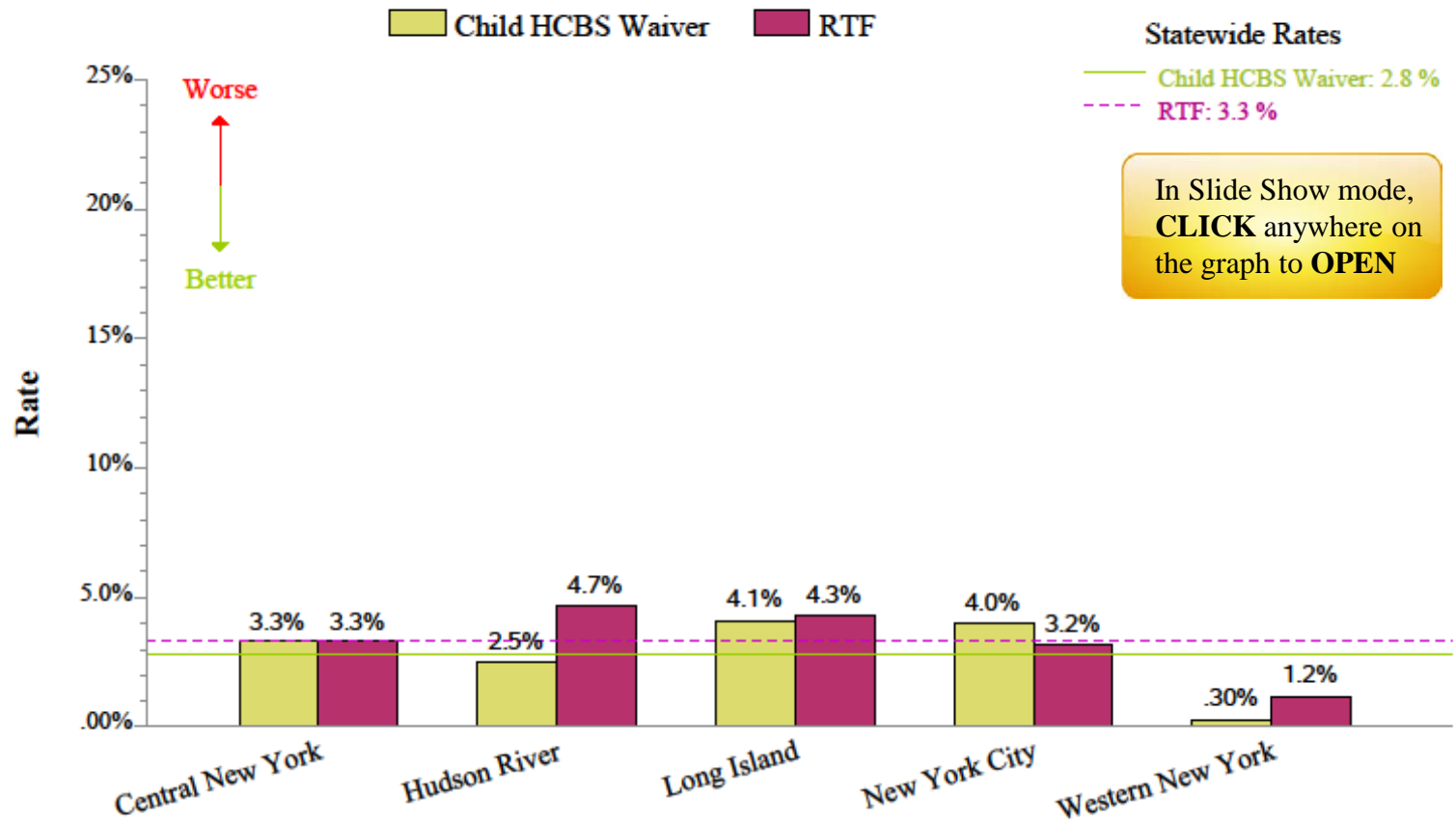
Note: (1) Reference lines represent Statewide rates.

Performance Comparison

Child HCBS Waiver vs. RTF



**Graph 1.1: Article 28/31 Hospital Admission by Region - 2012
for Children Discharged from Child HCBS Waiver vs. RTF
within 30 Days of Discharge**



In Slide Show mode,
CLICK anywhere on
the graph to **OPEN**

Performance Measures

Emergency Visits (Parson's C&F)



2011 & 2012 Child HCBS Waiver Performance Measures

145

Provider: Parsons Child and Family Center || Region: Hudson River

Measure Domain: Emergency Service Utilization

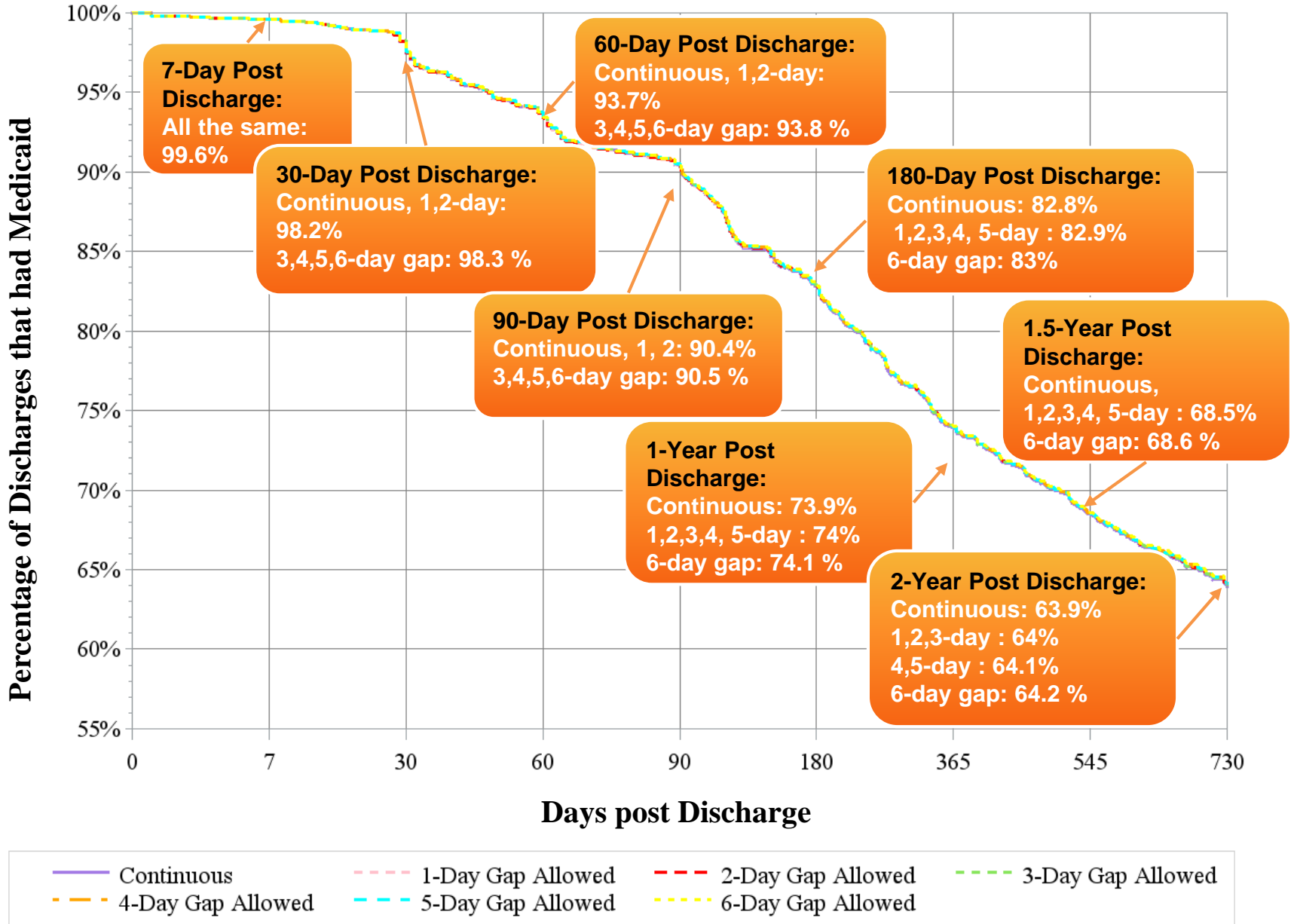
| Measure | Measure Type | Follow-up Window | CY 2011 Discharges | | | | | CY 2012 Discharges | | | | |
|-----------------------------------|--|------------------|------------------------|-------------|---------------|-------------|----------------|------------------------|-------------|---------------|-------------|----------------|
| | | | # Follow-up Events (1) | # Disch (2) | Provider Rate | Region Rate | Statewide Rate | # Follow-up Events (1) | # Disch (2) | Provider Rate | Region Rate | Statewide Rate |
| Percent of Discharges followed by | Psychiatric Emergency Service | 7 Days | 1 | 98 | 1.0% | 0.3% | 0.4% | 1 | 116 | 0.9% | 1.4% | 0.7% |
| | | 30 Days | 1 | 95 | 1.1% | 1.1% | 2.4% | 3 | 112 | 2.7% | 3.2% | 2.4% |
| | | 90 Days | 3 | 81 | 3.7% | 2.8% | 6.5% | 4 | 100 | 4.0% | 5.4% | 6.6% |
| | Medical Emergency Service | 7 Days | 1 | 98 | 1.0% | 2.4% | 1.4% | 1 | 116 | 0.9% | 1.0% | 1.2% |
| | | 30 Days | 5 | 95 | 5.3% | 5.7% | 4.6% | 4 | 112 | 3.6% | 5.3% | 3.9% |
| | | 90 Days | 10 | 81 | 12.3% | 12.2% | 11.5% | 5 | 100 | 5.0% | 10.1% | 10.1% |
| | Overall Emergency Service ⁽³⁾ | 7 Days | 2 | 98 | 2.0% | 2.8% | 1.7% | 2 | 116 | 1.7% | 2.1% | 1.7% |
| | | 30 Days | 6 | 95 | 6.3% | 6.7% | 6.8% | 6 | 112 | 5.4% | 7.1% | 5.7% |
| | | 90 Days | 12 | 81 | 14.8% | 14.2% | 16.1% | 8 | 100 | 8.0% | 12.8% | 14.7% |

Limitations

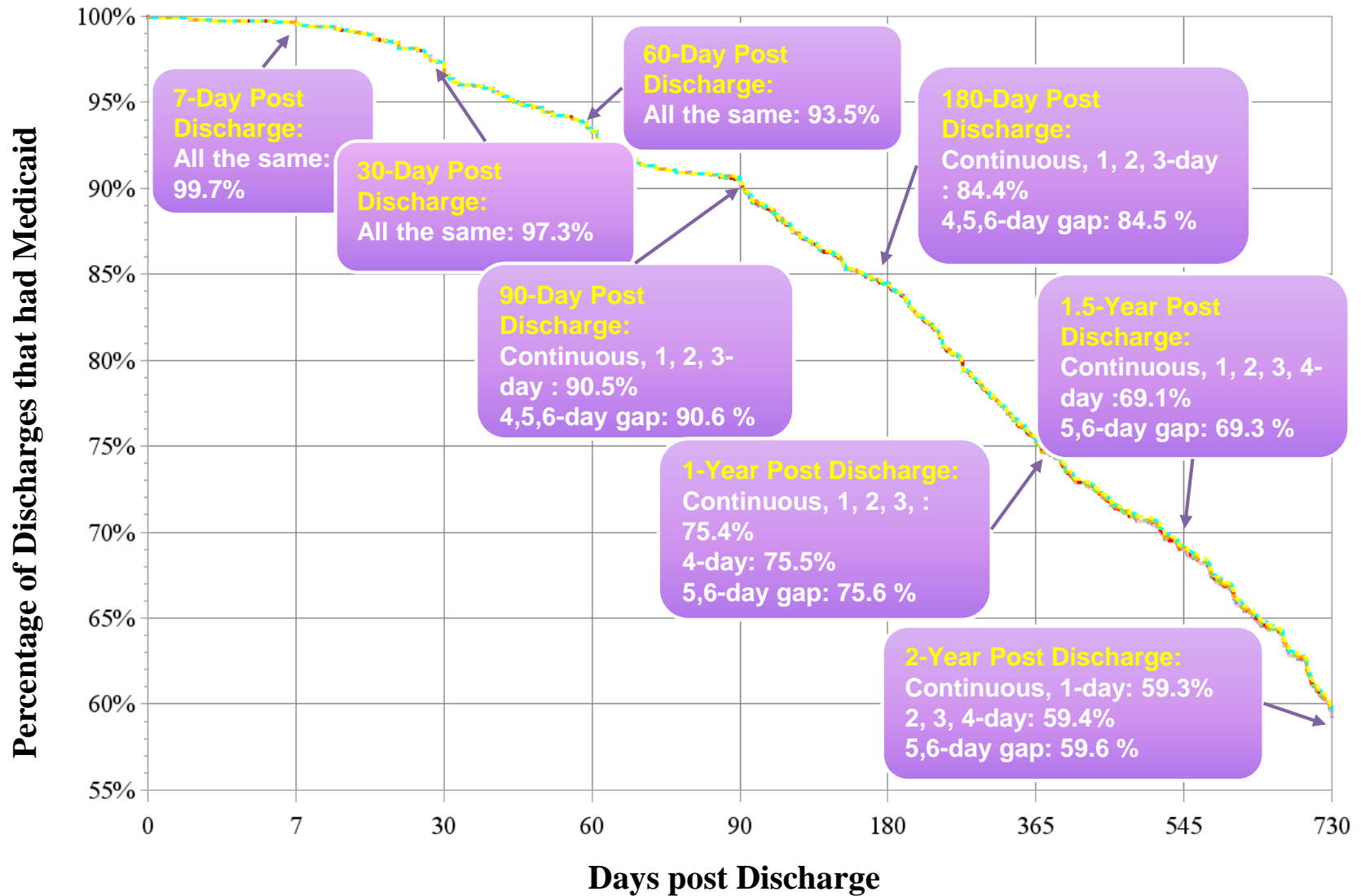


- ❑ Categories for the Living Situation patient characteristic are limited to available selections in CAIRS, which does not include adult housing options.
- ❑ An ER visit that results in a hospital admission in an Art. 28 hospital is captured in Medicaid as an inpatient stay. The Medicaid system does not record the visit as an ER event.
- ❑ The follow-up services counted in the metrics are from the Medicaid administrative data system. Services reported in the CAIRS data system were not used in deriving the measures.
- ❑ Follow-up measures are based on data submitted in Medicaid. Outpatient services covered by third party, private or self pay is not be captured by the metrics.

Child HCBS Waiver Medicaid Eligibility Profile (2011 Discharges) By Different Coverage Gap



Child HCBS Waiver Medicaid Eligibility Profile (2012 Discharges) By Different Coverage Gap



Findings



- ❑ No big difference were found between the 2011 and 2012 discharge cohorts.
- ❑ Western region's admission rates to RTF, Art. 28/31 and SPC hospitals were consistently the lowest among all regions.
- ❑ Central region showed higher rates for Psychiatric ER visits than for Medical ER visits, while other regions had lower Psychiatric ER visit rates.
- ❑ The 30-Day MH outpatient follow-up rates ranged from 24% (Long Island) to 46% (Central) for Clinic visits, and ranged from 10% (Hudson River) to 17% (Central) for Specialty visits.

Findings (cont.)



- ❑ Over half of children filled their Psychotropic prescription in a timely manner (within 45 days of discharge).
- ❑ More or less, the Child HCBS Waiver discharge cohort were less likely to have Inpatient , ER and Outpatient follow-up services, compared to the RTF discharge cohort.
- ❑ The discharge cohorts had high retention in Medicaid (~75% had Medicaid coverage 1 year post discharge).

Next Steps...



Possible Periodic Reports

- Annually

Future Metrics/Changes to Metrics:

- Engagement in Care (including Primary Care)
- Well-Child Care Visits (Weight Assessment and Counselling, Immunizations, Vaccinations, Lead Screening, etc.)
- Extension of the metric observation period.